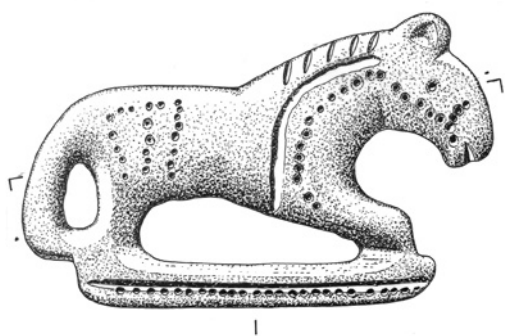


PRELIMINARY PROGRAMME

International Colloquium Archaeology in Contemporary Europe - ACE The Significance of the Past

*The very beginning of Europe?
Cultural and Social Dimensions of Early-Medieval Migration
and Colonisation (5th-8th century):*

BRUSSELS - MAY 17-19 2011



MAY, 17 2011

Location: Auditorium Vrije Universiteit Brussel, Pleinlaan 2, 1050 Brussels
<http://www.vub.ac.be/english/infoabout/campuses/index.html>

Evening lecture. G. Halsall (University of York, UK) with key-note lecture on the issues of Early Medieval Migration and Colonisation

Reception with drinks



PRELIMINARY PROGRAMME

MAY, 18 2011

Location: Hadewijch Auditorium in the Conscience building (Flemish Government), Koning Albert II-laan 15, 1210 Brussels

http://www.mobielvlaanderen.be/bereikbaarheidsgids/bestem_bru-no.php?a=13&nav=4

9:00h-9:30h: registration

9:30h-9:45h: introduction

SESSION IA: ELITE

9:45h-10:10h: I. Bede (Université Paris I Panthéon-Sorbonne, F), *The status of horses in the society of the late Avars in the Carpathian Basin*

10:10h-10:35h: M.C.Truc (Inrap/CRAHAM UMR6273/Université de Caen, F), *Un groupe de chefs francs à Saint-Dizier (Haute Marne, Champagne-Ardenne, France)?*

10:35h-11:05h: COFFEE

SESSION IB: NATURAL SCIENCES

11:05h-11:30h: D. Peters (Frankfurt, D), C. Knipper (Mainz, D) & A.-F. Maurer (Mainz, D), *The Lombards' migration – an isotope case study from early medieval central Europe*

11:30h-11:55h: R. Panhuysen, L. Smits, M. Kars & F. Theuws (Amsterdam Archaeological Centre - University of Amsterdam, NL), *Bioarchaeological indicators of human mobility in early medieval Maastricht*

11:55h-12:15h: discussion session I

12:15h-13:15h: LUNCH

SESSION II: IDENTITY AND LANDSCAPE

13:15h-13:40h: S. Brookes (UCL-Institute of Archaeology, London, UK), *The view from the sea: maritime migration and the colonised landscapes of Early Anglo-Saxon Kent.*

13:40h-14:05h: Chr. Ferguson (University of Oxford, UK), *Winds on the Water: paths of migration across the North Sea.*

14:05h-14:30h: P.-J. Deckers & D. Tys (VUB, Brussels, B), *The Flemish coastal plain within a North Sea context: Economy, power and identity*

14:30h-15:00h: COFFEE

15:00h-15:25h: S. Messal (Römisch-Germanische Kommission, Frankfurt/Main, D), *The Slavonisation of the south-western Baltic region.*

15:25h-15:50h: A. De Man (Universidade Nova de Lisboa, P), *Forms of Late Antique settlement in Lusitania.*

15:50h-16:15h: J. Hendriks (Amsterdam Archaeological Centre – University of Amsterdam, NL), *Transforming villa landscapes in Germania secunda. A case of appropriation or alienation?*

16:15h-16:40h: P. Walton Rogers (Anglosaxon Laboratory, York, UK), *In the borderlands: two sites on the edge of the former Iceni territory in East Anglia*

16:40h-17:00h: discussion session II

20:00h: Evening lecture on the history and issues of modern migrations by L. Lucassen (University of Leiden, NL), *Cross cultural migration as the engine of social change: a global historical perspective* (freely open to the general public).

Location: Centre for Fine Arts (BOZAR) – Zaal Studio, Ravensteinstraat 32, 1000 Brussels

<http://www.bozar.be/webpage.php?pageid=127&>



PRELIMINARY PROGRAMME

MAY, 19 2011

Location: Hadewijch Auditorium in the Conscience building (Flemish Government),
Koning Albert II-laan 15, 1210 Brussels
http://www.mobielvlaanderen.be/bereikbaarheidsgids/bestem_bru-no.php?a=13&nav=4

SESSION III: IDENTITY AND URBAN CENTRES

9:15h- 9:40h: L. Verslype (UCL, B), *Continuity, transformation and emergence of the urbanized settlements through the Merovingian period along the northern edge of Neustria and Austrasia.*

9:40h- 10:05h: R. Brulet (Directeur du CRAN et pdt. de l'Institut INCAL, B), *Tournai, capitale du Bas-Empire et évolution au Haut Moyen-Âge*

10:05h-10:30h: A. Vanderhoeven (VIOE, Brussels, B), *The late roman and early medieval urban topography of Tongeren.*

10:30h-11:00h: COFFEE

11:00h-11:25h: L. Blackmore (Museum of London, UK) (London in the transition of the late Roman to early medieval period)

11:25h-11:50h: J. Beltrán de Heredia Bercero (Cap del Conjunt Monumental, Barcelona, E), *Barcelona, de sede regia a capital condal: continuidades y cambios*

11:50h-12:10h: discussion session III

12:10h-13:10h: LUNCH

SESSION IVA: CEMETERIES

13:10h-13:35h: C. Hills (Cambridge University, UK), *Spong Hill*

13:35h-14:00h: 13:35h-14:00h: D. Jouneau, M. Guillon, et al. (Inrap, F), *Migration or acculturation? The Saint-Crespin cemetery case (Romilly-sur-Andelle, Eure, France): confrontation between biological anthropological facts and burial artefacts.*

14:00h-14:25h: A. Willemsen (National Museum of Antiquities, Leiden, NL), *Questioning migration: continuity and change in the cemetery of Rhenen (4th-8th century AD).*

14:25h-14:50h: R. Annaert (VIOE, Brussels, B), *Who was buried at the Broechem cemetery (5th-7th century AD)?*

14:50h-15:20h: COFFEE

SESSION IVB: MATERIAL CULTURE

15:20h-15:45h: L. van Wersch (Ulg, Liège, B), *Ceramic and glass in the Mosan valley: picture of a changing culture between the late Vth and the VIIth century.*

15:45h-16:10h: D. Nösler (Wilhemshaven, D), *Traditions in craft? Analyses of ceramics of the 'Dark Ages' from north-western Germany.*

16:10h-16:35h: J. Soulat (Paris, F), *Les céramiques de type anglo-saxon le long des côtes de la Manche et leur parallèle avec le bassin de l'Escaut.*

16:35h-16:55h: Y. Hollevoet (Raakvlak, Bruges-B), *Material culture and ethnicity: the evidence of coastal Flanders*

16:55h-17:15h: discussion session IV

17:15h-17:45h: conclusion by F. Theuws (University of Amsterdam, NL)

17:45h-19:00h: drink

